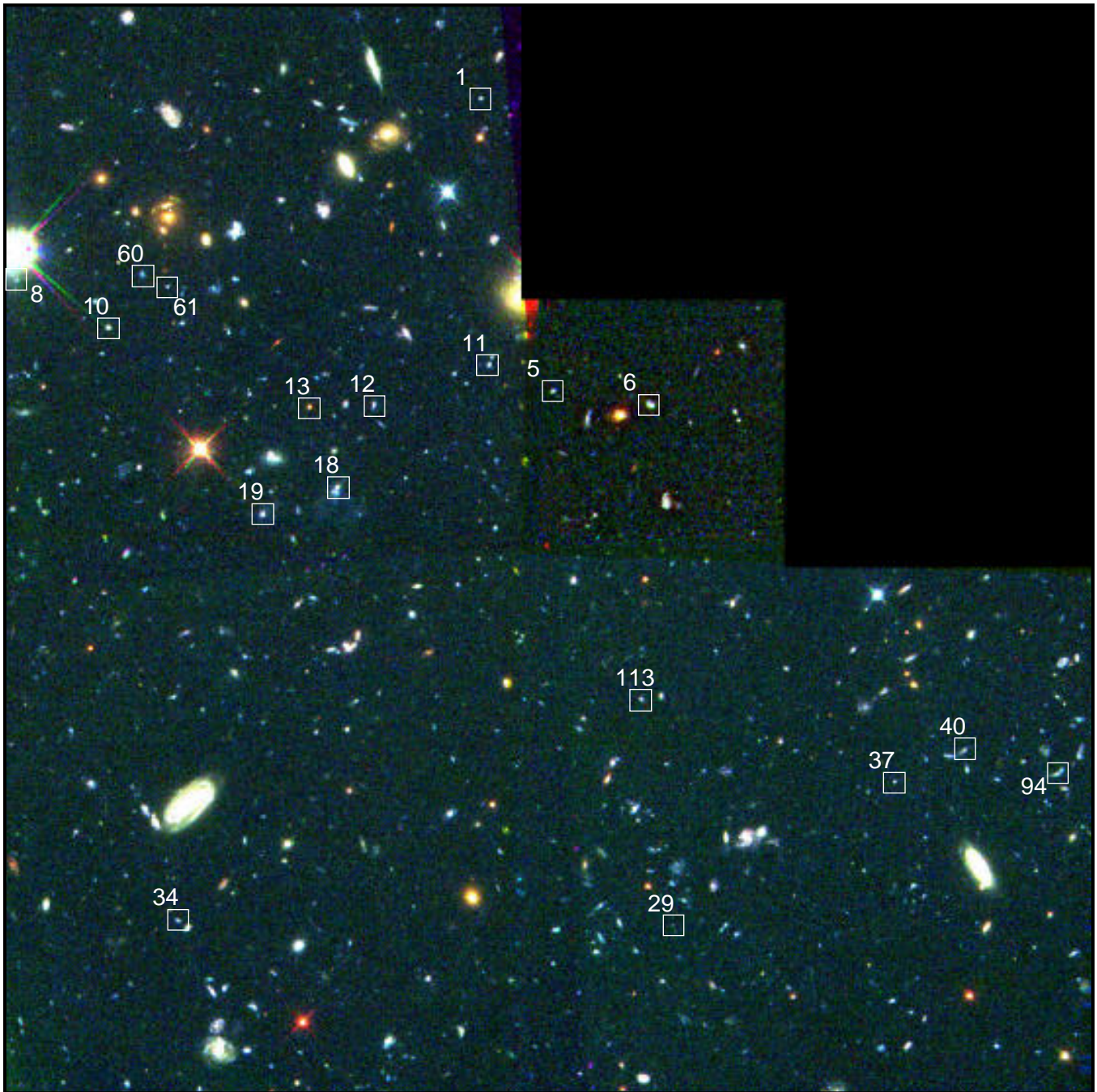


Key to Location of Galactic Building Blocks in Hubble Field



The boxes in this color image identify 18 sub-galactic sized objects in a Hubble Space Telescope survey of faint galaxies. All the boxed objects are at the same distance from Earth (11 billion light-years), and are scattered across an area of sky 2 million light-years across. They are close enough to each other they may eventually merge to form normal galaxies.

Credit: Rogier Windhorst (Arizona State University) and NASA